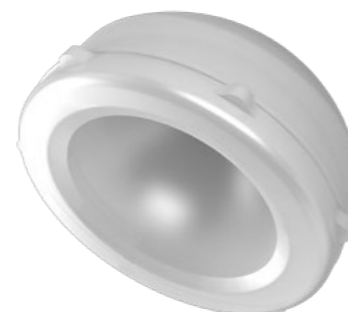


MODULAR SHELL



PART NO.	SIZE (MM)	DESCRIPTION
MO-MSEC-40/MA	40/MA	Cementless Ti6Al4V-ELI 40 mm Modular Shell
MO-MSEC-42/MA	42/MA	Cementless Ti6Al4V-ELI 42mm Modular Shell
MO-MSEC-44/MB	44/MB	Cementless Ti6Al4V-ELI 44mm Modular Shell
MO-MSFC-46/MB	46/MB	Cementless Ti6Al4V-ELI 46mm Modular Shell
MO-MSFC-48/MD	48/MD	Cementless Ti6Al4V-ELI 48mm Modular Shell
MO-MSFC-50/MD	50/MD	Cementless Ti6Al4V-ELI 50mm Modular Shell
MO-MSFC-52/MF	52/MF	Cementless Ti6Al4V-ELI 52mm Modular Shell
MO-MSFC-54/MF	54/MF	Cementless Ti6Al4V-ELI 54mm Modular Shell
MO-MSFC-56/MH	56/MH	Cementless Ti6Al4V-ELI 56mm Modular Shell
MO-MSFC-58/MH	58/MH	Cementless Ti6Al4V-ELI 58mm Modular Shell
MO-MSFC-60/MJ	60/MJ	Cementless Ti6Al4V-ELI 60mm Modular Shell
MO-MSFC-62/MJ	62/MJ	Cementless Ti6Al4V-ELI 62mm Modular Shell
MO-MSFC-64/MJ	64/MJ	Cementless Ti6Al4V-ELI 64mm Modular Shell
MO-MSFC-66/MK	66/MK	Cementless Ti6Al4V-ELI 66mm Modular Shell
MO-MSFC-68/MK	68/MK	Cementless Ti6Al4V-ELI 68mm Modular Shell
MO-MSFC-70/MK	70/MK	Cementless Ti6Al4V-ELI 70mm Modular Shell

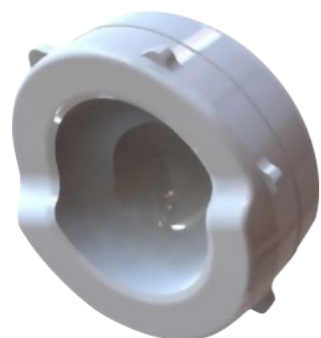
Material : Titanium alloy (Ti6Al4V – ELI) with Ti-Growth[®] Titanium plasma spray coating



MODULAR LINER – NEUTRAL (HXLPE)

PART NO.	SIZE (MM)	DESCRIPTION
MO-MLHE-MA/22	MA/22	HXLPE MA/22 Modular Liner
MO-MLHE-MB/22	MB/22	HXLPE MB/22 Modular Liner
MO-MLHE-MB/28	MB/28	HXLPE MB/28 Modular Liner
MO-MLHE-MD/28	MD/28	HXLPE MD/28 Modular Liner
MO-MLHE-MD/32	MD/32	HXLPE MD/32 Modular Liner
MO-MLHE-MF/28	MF/28	HXLPE MF/28 Modular Liner
MO-MLHE-MF/32	MF/32	HXLPE MF/32 Modular Liner
MO-MLHE-MF/36	MF/36	HXLPE MF/36 Modular Liner
MO-MLHE-MH/28	MH/28	HXLPE MH/28 Modular Liner
MO-MLHE-MH/32	MH/32	HXLPE MH/32 Modular Liner
MO-MLHE-MH/36	MH/36	HXLPE MH/36 Modular Liner
MO-MLHE-MJ/32	MJ/32	HXLPE MJ/32 Modular Liner
MO-MLHE-MJ/36	MJ/36	HXLPE MJ/36 Modular Liner
MO-MLHE-MJ/40	MJ/40	HXLPE MJ/40 Modular Liner
MO-MLHE-MK/32	MK/32	HXLPE MK/32 Modular Liner
MO-MLHE-MK/36	MK/36	HXLPE MK/36 Modular Liner
MO-MLHE-MK/40	MK/40	HXLPE MK/40 Modular Liner

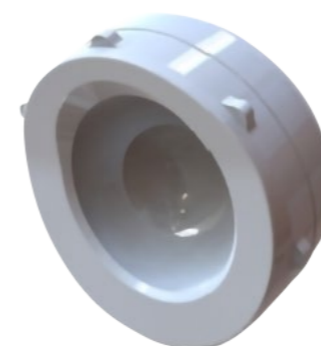
Material : Highly Cross-linked Ultra-High Molecular Weight Polyethylene (HXLPE – Grade : GUR[®] 1020) cross linked at radiation dose of 75 kGy



MODULAR LINER: ELEVATED WALL (HXLPE)

PART NO.	SIZE (MM)	DESCRIPTION
MO-MLLE-MA/22	MA/22	Modular Liner Size MA/22 Elevated Wall
MO-MLLE-MB/22	MB/22	Modular Liner Size MB/22 Elevated Wall
MO-MLLE-MB/28	MB/28	Modular Liner Size MB/28 Elevated Wall
MO-MLLE-MD/28	MD/28	Modular Liner Size MD/28 Elevated Wall
MO-MLLE-MD/32	MD/32	Modular Liner Size MD/32 Elevated Wall
MO-MLLE-MF/28	MF/28	Modular Liner Size MF/28 Elevated Wall
MO-MLLE-MF/32	MF/32	Modular Liner Size MF/32 Elevated Wall
MO-MLLE-MF/36	MF/36	Modular Liner Size MF/36 Elevated Wall
MO-MLLE-MH/28	MH/28	Modular Liner Size MH/28 Elevated Wall
MO-MLLE-MH/32	MH/32	Modular Liner Size MH/32 Elevated Wall
MO-MLLE-MH/36	MH/36	Modular Liner Size MH/36 Elevated Wall
MO-MLLE-MJ/32	MJ/32	Modular Liner Size MJ/32 Elevated Wall
MO-MLLE-MJ/36	MJ/36	Modular Liner Size MJ/36 Elevated Wall
MO-MLLE-MJ/40	MJ/40	Modular Liner Size MJ/40 Elevated Wall
MO-MLLE-MK/32	MK/32	Modular Liner Size MK/32 Elevated Wall
MO-MLLE-MK/36	MK/36	Modular Liner Size MK/36 Elevated Wall
MO-MLLE-MK/40	MK/40	Modular Liner Size MK/40 Elevated Wall

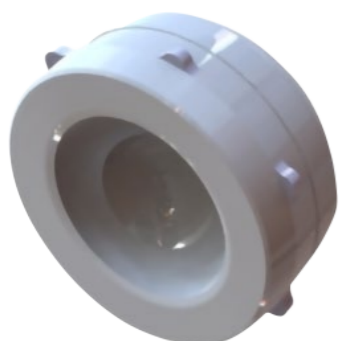
Material : Highly Cross-linked Ultra-High Molecular Weight Polyethylene (HXLPE – Grade : GUR[®] 1020) cross linked at radiation dose of 75 kGy



MODULAR LINER: 10° OBLIQUE (HXLPE)

PART NO.	SIZE (MM)	DESCRIPTION
MO-MLJE-MA/22	MA/22	Modular Liner Size MA/22 10° Oblique
MO-MLJE-MB/22	MB/22	Modular Liner Size MB/22 10° Oblique
MO-MLJE-MB/28	MB/28	Modular Liner Size MB/28 10° Oblique
MO-MLJE-MD/28	MD/28	Modular Liner Size MD/28 10° Oblique
MO-MLJE-MD/32	MD/32	Modular Liner Size MD/32 10° Oblique
MO-MLJE-MF/28	MF/28	Modular Liner Size MF/28 10° Oblique
MO-MLJE-MF/32	MF/32	Modular Liner Size MF/32 10° Oblique
MO-MLJE-MF/36	MF/36	Modular Liner Size MF/36 10° Oblique
MO-MLJE-MH/28	MH/28	Modular Liner Size MH/28 10° Oblique
MO-MLJE-MH/32	MH/32	Modular Liner Size MH/32 10° Oblique
MO-MLJE-MH/36	MH/36	Modular Liner Size MH/36 10° Oblique
MO-MLJE-MJ/32	MJ/32	Modular Liner Size MJ/32 10° Oblique
MO-MLJE-MJ/36	MJ/36	Modular Liner Size MJ/36 10° Oblique
MO-MLJE-MJ/40	MJ/40	Modular Liner Size MJ/40 10° Oblique
MO-MLJE-MK/32	MK/32	Modular Liner Size MK/32 10° Oblique
MO-MLJE-MK/36	MK/36	Modular Liner Size MK/36 10° Oblique
MO-MLJE-MK/40	MK/40	Modular Liner Size MK/40 10° Oblique

Material : Highly Cross-linked Ultra-High Molecular Weight Polyethylene (HXLPE – Grade : GUR[®] 1020) cross linked at radiation dose of 75 kGy



MODULAR LINER: + 4MM OFFSET (HXLPE)

PART NO.	SIZE (MM)	DESCRIPTION
MO-MLUE-MA/22	MA/22	Modular Liner Size MA/22 +4mm Offset
MO-MLUE-MB/22	MB/22	Modular Liner Size MB/22 +4mm Offset
MO-MLUE-MB/28	MB/28	Modular Liner Size MB/28 +4mm Offset
MO-MLUE-MD/28	MD/28	Modular Liner Size MD/28 +4mm Offset
MO-MLUE-MD/32	MD/32	Modular Liner Size MD/32 +4mm Offset
MO-MLUE-MF/28	MF/28	Modular Liner Size MF/28 +4mm Offset
MO-MLUE-MF/32	MF/32	Modular Liner Size MF/32 +4mm Offset
MO-MLUE-MF/36	MF/36	Modular Liner Size MF/36 +4mm Offset
MO-MLUE-MH/28	MH/28	Modular Liner Size MH/28 +4mm Offset
MO-MLUE-MH/32	MH/32	Modular Liner Size MH/32 +4mm Offset
MO-MLUE-MH/36	MH/36	Modular Liner Size MH/36 +4mm Offset
MO-MLUE-MJ/32	MJ/32	Modular Liner Size MJ/32 +4mm Offset
MO-MLUE-MJ/36	MJ/36	Modular Liner Size MJ/36 +4mm Offset
MO-MLUE-MJ/40	MJ/40	Modular Liner Size MJ/40 +4mm Offset
MO-MLUE-MK/32	MK/32	Modular Liner Size MK/32 +4mm Offset
MO-MLUE-MK/36	MK/36	Modular Liner Size MK/36 +4mm Offset
MO-MLUE-MK/40	MK/40	Modular Liner Size MK/40 +4mm Offset

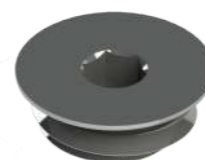
Material : Highly Cross-linked Ultra-High Molecular Weight Polyethylene (HXLPE – Grade : GUR[®] 1020) cross linked at radiation dose of 75 kGy



BONE SCREW

PART NO.	SIZE (MM)	DESCRIPTION
MO-SWCC-65/15	15	Ti6Al4V-ELI Ø 6.5 mm length 15 mm Bone Screw
MO-SWCC-65/20	20	Ti6Al4V-ELI Ø 6.5 mm length 20 mm Bone Screw
MO-SWCC-65/25	25	Ti6Al4V-ELI Ø 6.5 mm length 25 mm Bone Screw
MO-SWCC-65/30	30	Ti6Al4V-ELI Ø 6.5 mm length 30 mm Bone Screw
MO-SWCC-65/35	35	Ti6Al4V-ELI Ø 6.5 mm length 35 mm Bone Screw
MO-SWCC-65/40	40	Ti6Al4V-ELI Ø 6.5 mm length 40 mm Bone Screw
MO-SWCC-65/45	45	Ti6Al4V-ELI Ø 6.5 mm length 45 mm Bone Screw
MO-SWCC-65/50	50	Ti6Al4V-ELI Ø 6.5 mm length 50 mm Bone Screw

Material : Titanium alloy (Ti6Al4V – ELI)



APICAL HOLE OCCLUDER

PART NO.	DESCRIPTION
MO-AOAC-10/35	Ti6Al4V-ELI M10 Threading 3.5 mm hex drive Apical Hole Occluder

Material : Titanium alloy (Ti6Al4V – ELI)

Libertas[®] Hip System

Rx only

EC REP

Maxx Orthopedics, Inc.
Norristown, PA 19403, USA

AJW Consulting GmbH
Königsallee 106
40215 Düsseldorf, Germany
Phone: +49(0) 211 3013 2232
Email: info@ajwtech.com

CE 2460

Carefully read all instructions and be familiar with the surgical techniques prior to use.

Please see the package insert for complete device description, product selection information, indications, contraindications, precautions, adverse effects, warnings, materials, sterilization and patient guidance associated with the Libertas[®] Total Hip System.

CAUTION: THIS DEVICE IS RESTRICTED TO SALE BY OR ON THE ORDER OF A LICENSED PHYSICIAN

WARNINGS: THE LIBERTAS[®] CEMENTED FEMORAL STEM IS INTENDED FOR CEMENTED USE ONLY.
 THE LIBERTAS[®] UNCEMENTED FEMORAL STEM IS INTENDED FOR UNCEMENTED USE ONLY.

LIBERTAS[®] Hip is manufactured by Maxx Orthopedics, Inc. LIBERTAS, LIBERTAS HIP, and Pursue Life are Registered Trademarks of Maxx Orthopedics, Inc.

MODULAR SHELL SIZES (MM)	MODULAR FEMORAL HEAD SIZES (MM)					MODULAR LINER SIZES
	22*	28	32	36	40	
40						MA
42						MA
44						MB
46						MB
48						MD
50						MD
52						MF
54						MF
56						MH
58						MH
60						MJ
62						MJ
64						MJ
66						MK
68						MK
70						MK

* Not available in BioloX[®] delta Modular Femoral Head

NOTE

- The Libertas[®] Acetabular Cup System has been designed to assemble with Modular Shell and Modular Liner assembly that utilize a 22mm, 28mm, 32mm, 36mm or 40mm Cobalt Chromium Alloy Modular Femoral Head or 28mm, 32mm, 36mm or 40mm BioloX[®] delta Modular Femoral Head.

WARNING AND PRECAUTIONS

- The Libertas[®] Acetabular Cup System when used along with LIBERTAS Cemented Femoral Stem, It is not recommended to use the Cobalt-Chromium Alloy Modular Femoral Head above 28mm and BioloX[®] delta Modular Femoral Head above 28mm.